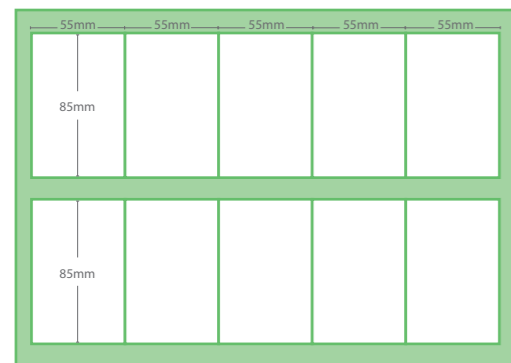


## Specifications

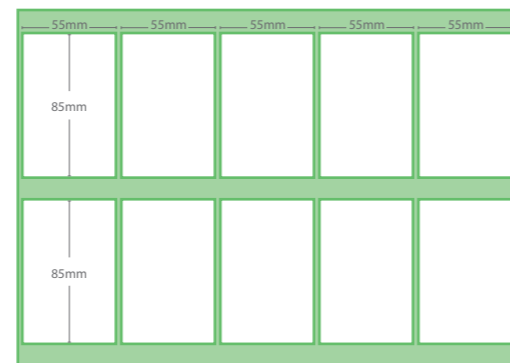
<b>Paper Size</b>	229 x unlimited mm	<b>Error detection</b>	Paper Jam, Cut mark detection error, No slitter unit, Cover open
<b>Maximum Cut Size</b>	148 x 210 mm	<b>Job memories</b>	12 Job memories (2 business card, 1 postcard, 1 photo card, 8 user-defined)
<b>Minimum Cut Size</b>	85 x 30 mm	<b>Dimension</b>	570mm (W) x 410mm (D) x 280mm (H)
<b>Paper Weight</b>	120gsm ~ 350gsm	<b>Net Weight</b>	60 lbs (27Kgs)
<b>Feeder Capacity</b>	100 sheets (25mm)	<b>Power</b>	220V, 50/60Hz, 1.2 A
<b>Receiving Tray</b>	500 business cards	<b>Options</b>	Perforating module, Scoring module
<b>Speed</b>	130 business cards / min (Single Cut)		
<b>Accuracy</b>	± 0.2mm		

Note: 85mm cut or 90mm cut modules are available

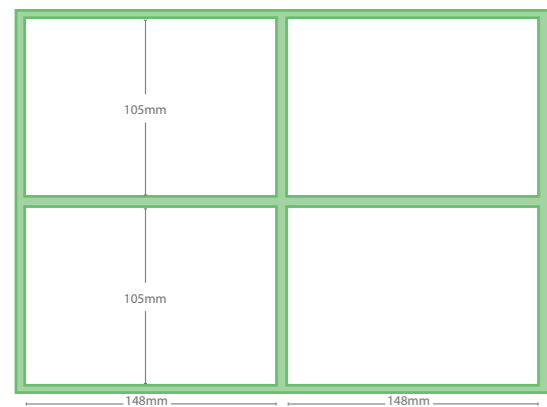
### JOB 1 - A4 Business Card



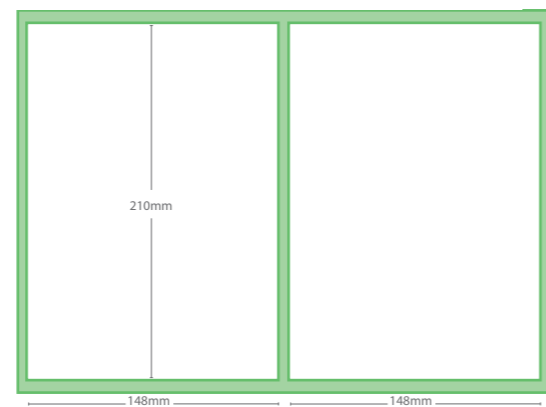
### JOB 2 - A4 Business Card



### JOB 3 - SRA4 Postcard



### JOB 4 - SRA4 Photo Card



Job No.	Description	Paper size	Cards	Finished Length	Top Margin	Cutting Gutter	Bottom Margin	Slitting Margin	Slitting Gutter
1	55 x 85mm no gutter business card no mark	(210 x 297) A4	2 x 5	55	12.7	0	9.3	13.7/13.6	12.7
2	55 x 85 mm gutter business card no mark	(210 x 297) A4	2 x 5	55	6.4	3.2	2.8	13.7/13.6	12.7
3	105 x 148mm (A6) gutter post card no mark	(320 x 225) SRA4	2 x 2	148	12.7	6	5.3	4.5/4.5	6
4	148 x 210mm (A5) gutter photo no mark	(320 x 225) SRA4	1 x 2	148	12.7	6	5.3	5.6/5.7	6

Jobs 5-12 are user-defined

### Duplo International Limited

Sandown Industrial Park,  
Mill Road,  
Esher,  
Surrey KT10 8BL

Tel +44(0) 1372-468-131 - Fax +44(0) 1372-460-252  
info@duplointernational.com  
www.duplointernational.com

Duplo is a trade mark of the Duplo Corporation. Duplo has a policy of continuous improvement and reserves the right to amend the above specification without prior notice

Production rates are based on optimal operating conditions and may vary depending on stock and environmental conditions. As part of our continuous product improvement program, specifications are subject to change without notice.



Ref: UC130/10/10

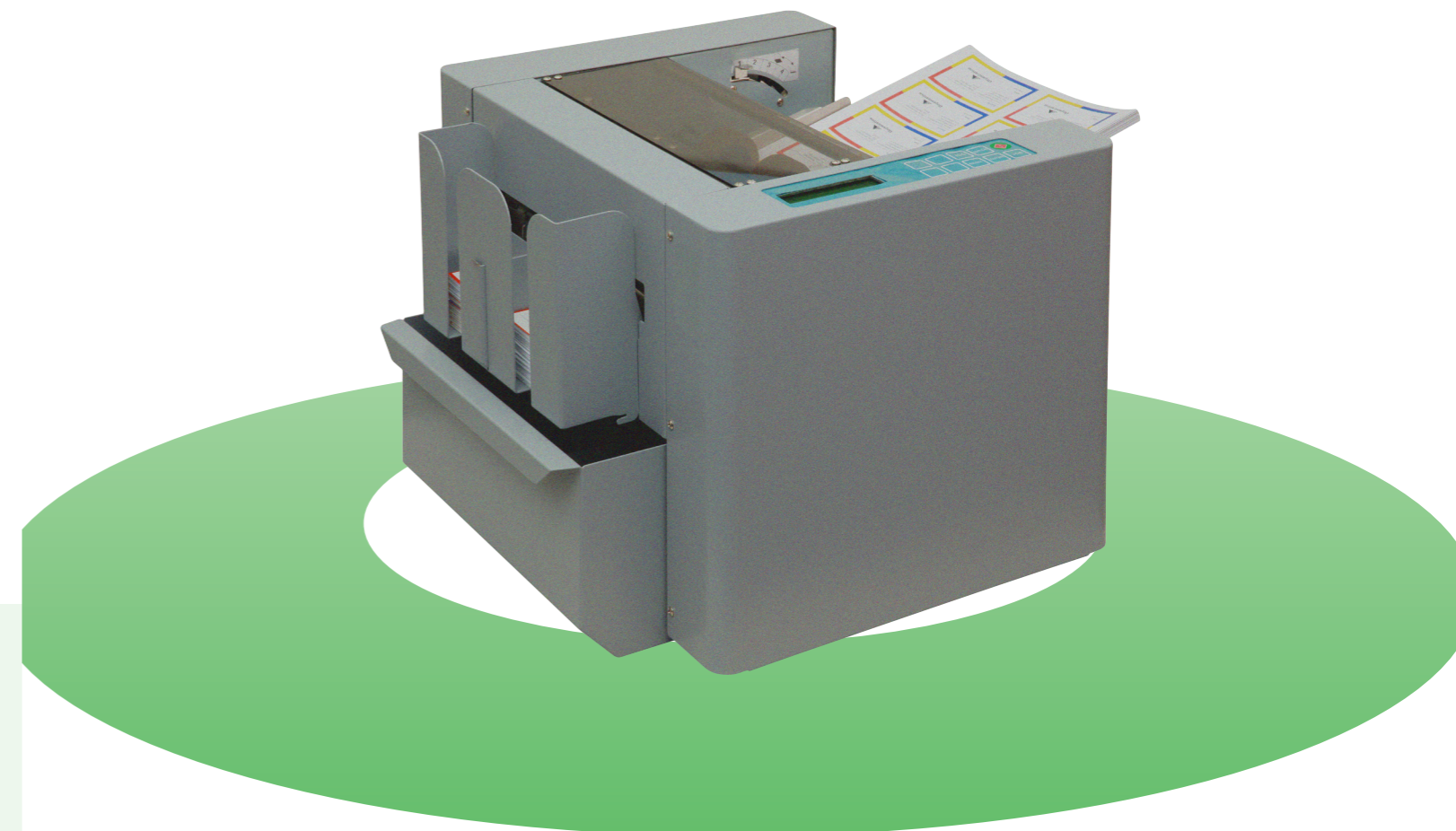
**Duplo**<sup>®</sup>  
from print to documents

# ULTRA CUT 130 BUSINESS CARD CUTTER

HIGH SPEED BUSINESS CARD PRODUCTION  
FROM YOUR DESKTOP

130 cards per minute  
25mm feed tray  
500 card stacker (200 gsm)  
12 job memories  
Optional perforating and scoring modules

Business Cards, Postcards, Photo Cards, Tickets, Vouchers



The Ultra Cut 130 produces professionally cut business cards and postcards from your desktop. Save time and money by eliminating the need for a guillotine.



### High Productivity

Despite its small size the Ultra Cut 130 boasts one of the highest productivity levels in its class! At speeds of 130 business cards per minute (A4, short-edge feed), the Ultra Cut 130 offers a very competitive and productive solution. The 100-sheet (25mm) capacity allows the operator to produce 1,000 business cards in less than 8 minutes.



### User Friendly

The control panel is extremely user-friendly, there is no need to scroll through long menus, simply select the job memory or enter the parameters.



### Multiple Applications

Don't be restricted to one job, the Ultra Cut 130 can produce an array of applications including A6 postcards, greeting cards or even perforated tickets.



### Versatile Stacking

There is no need to insert a second stacker, its unique 80mm stacker tray can be used to accept a range of different sized cards.



### Reduced Costs

Outsourcing guillotining can incur high running costs with set-up and also charges per cut. The Ultra Cut 130 eliminates the need to outsource, saving a great deal of time and money.

The Ultra Cut 130 can even feed SRA4, an excellent cost saving solution should the user wish to reduce their click charge. Simply print on SRA3, cut into two and place in the Ultra Cut 130.



### Easy module replacement

Switching modules is a tool-less operation and takes a matter of seconds. Simply unscrew the knob and insert the module into the machine.



### Options

#### Scoring Module

The scoring module is perfect for producing greetings card jobs.

#### Perforating Module

Insert the perforating module and create tear off tickets.

#### Photo Card Module

The photo card module allows the user to produce 2 up A5 from SRA4 card.

#### Postcard Module

Produce 4 up, A6 Postcards on SRA4. Eight postcards can be printed on SRA3 before being guillotined.

## Automatic Set-up

The Ultra Cut 130 requires no manual adjustments, simply select a job and press the start button. All of the adjustments are done automatically meaning jobs can be started easily and efficiently.

## Cut Mark Detection

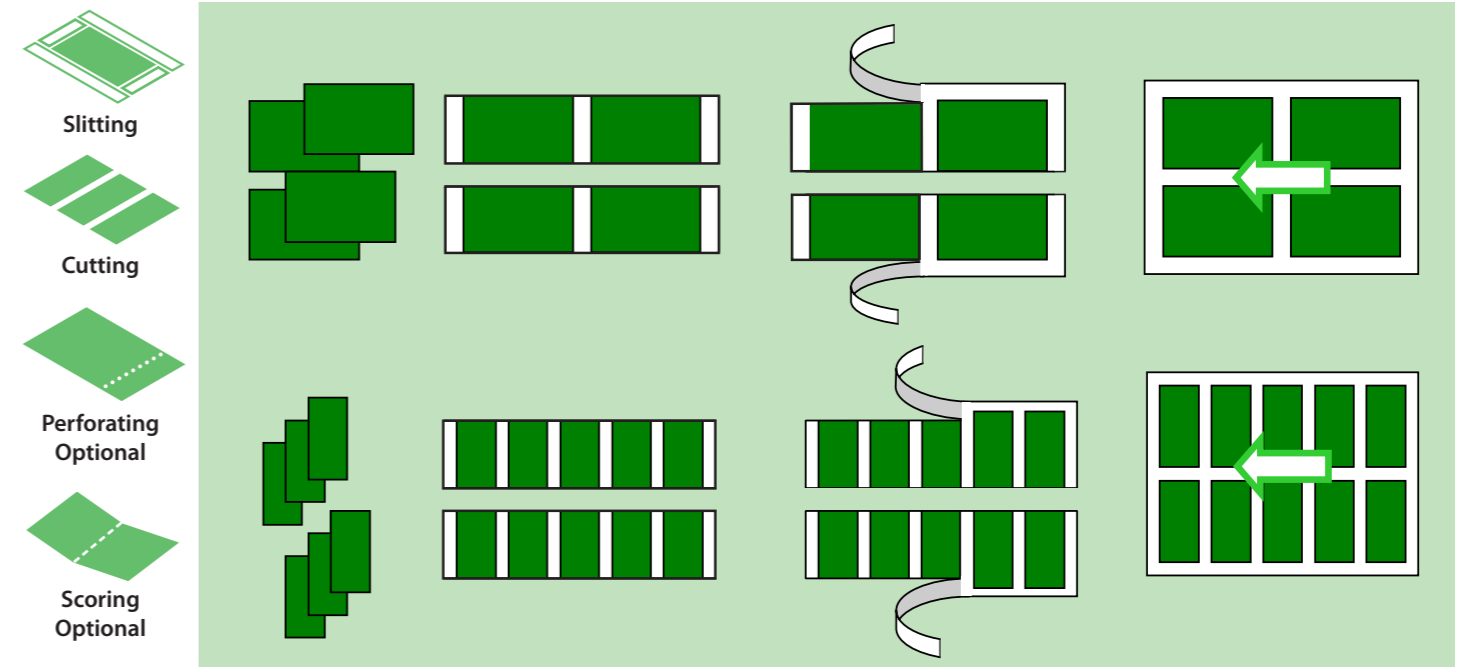
Cut mark detection is also featured on the Ultra Cut 130. This is a great feature, which saves a great deal of time during set-up. A 2mm cut mark can be detected allowing the machine to identify the top margin, an ideal feature for on-demand business card making.

## User Defined Programs

User defined jobs can also be created. The buttons on the control panel allow the user to adjust the card length, top margin and width of the gutter cut. Optional scoring and perforating modules are also available should the user wish to customise their jobs.

## 12 Job Memories

The Ultra Cut 130 features 12 job memories consisting of six user-defined and six pre-programmed jobs. This provides real peace of mind for users with no experience of producing business cards.



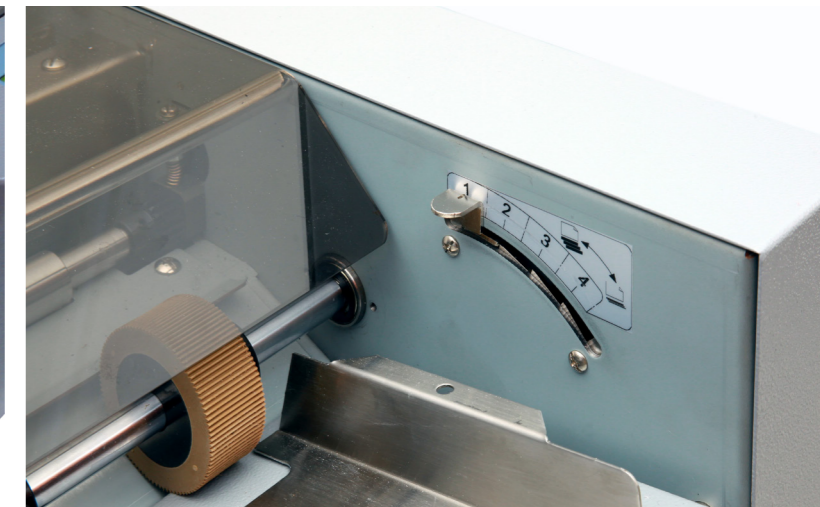
Ultra Cut 130 feed system



Quick module release



Adjustable stacker



Fine tune for different paper weights